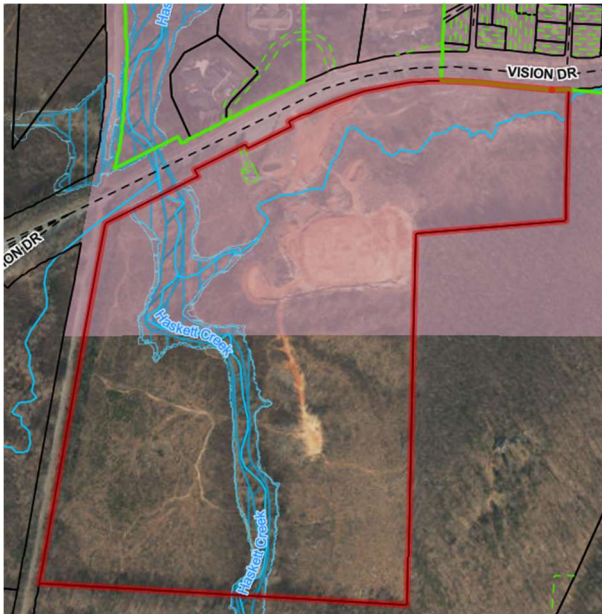


Our Faith's Journey

ONE LORD, ONE FAITH, ONE CHURCH, ONE PARISH



← We are blessed to own 97 acres of a rolling countryside complete with “natural water features” along Vision Drive. We have been earnestly working with the Diocese of Charlotte and the NC Dept. of Environmental Quality since March to ensure that our ongoing construction work both protects and preserves this very scenic landscape. In fact, we have met twice in July with the Diocese and NCDEQ at the new site which has resulted in this phase of the project being completed by the end of August.

Now we are reengaging with the Diocesan Capital Construction Team in the planning, approval, and completion of a new church campus for our parish. See below for more on recent activities.

Why Build a New Church?	A Journey?	Your Input is Needed!
To grow the Catholic Faith in and around our Asheboro community. To provide the means to save Souls for our Lord, Jesus Christ.	The word journey almost always indicates the need for planning, that it will take time, and that it has a destination in mind. We expect the unexpected but firmly intend to persevere toward our destination.	In the coming weeks, our Parish Executive Building Committee and Parish Connect Team will both be reaching out to gather your input on the types of buildings needed, the size and character of these buildings, cemetery and columbarium, and other components for a new parish campus. Please participate!!

Executive Building Committee met with Diocesan advisors on 6 August 2025.

Next Steps:

- 1) Update our Parish Pastoral Plan
- 2) Gather Parish building needs input.
- 3) Prepare the new property for Kermes on 14 Sept.
- 4) Update our Parish Financial Plan
- 5) Request from the Diocese a formal Site Plan for the new property
- 6) Fall Meeting with Diocesan Team.

Financial Overview - Capital Budget

St Joseph Parish Building Financial Overview 21 Aug 2025		Phase I: Multipurpose Building
Item	Amount	Comment
Savings/Bld Fund	1,965,889	Cash on hand August 2025
Value of Current Property	750,000	512 W Wainman
Additional Capital Campaign	3,000,000	TBD
Other Fund Raising	129,000	Kermes, Fall Festival, 2025 \$\$ (8K/Month), etc.
Total Est. Assets	5,844,889	
Est. Multipurpose Bld		Total Estimated Cost for a Multipurpose building used as a church while a new church moves through the planning and construction phase.
TOTAL Cost	6,587,442	
Diocesan Loan Required	742,553	

Current Plan and Timeline: Phase I: Build a Multipurpose Building (Classrooms, Temporary Church/Chapel, Commercial Kitchen, Offices, etc.) and sell the current church property in 2025-2027;

Phase II: Build a New Church. Plan, Fund, and Construction in 2027-2030;